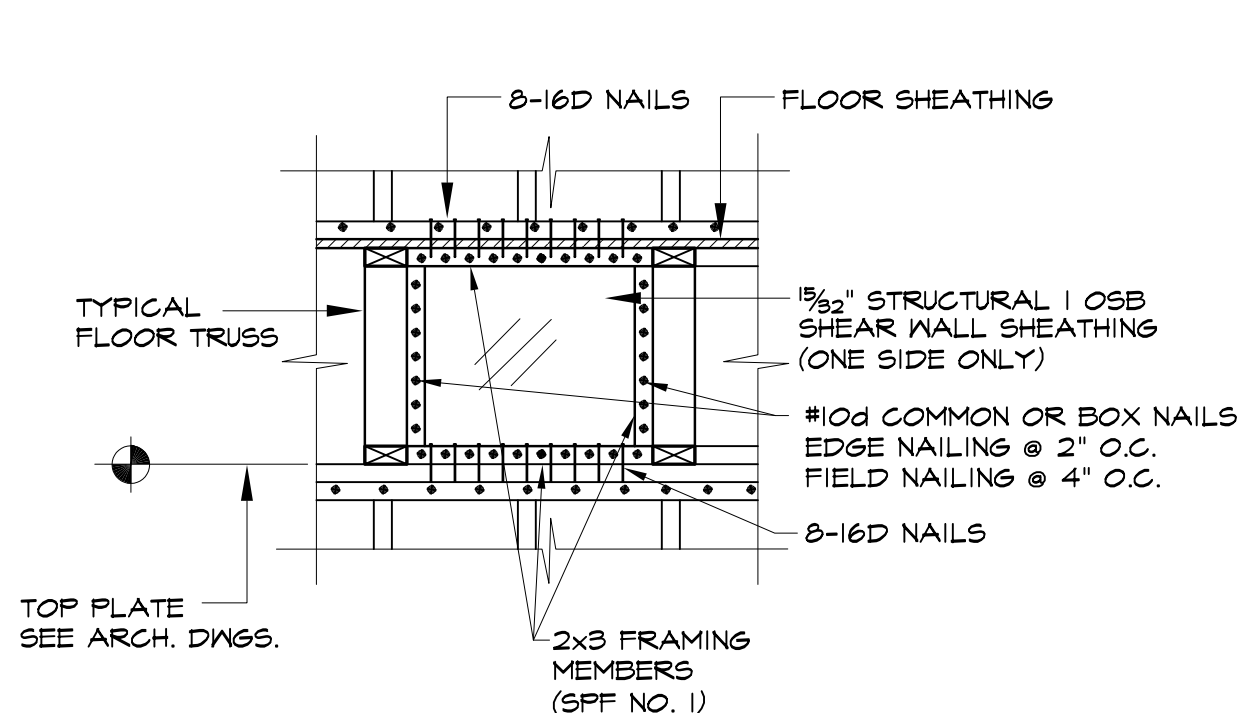


SWI-7/16" PLYWOOD(OSB) ONE SIDE

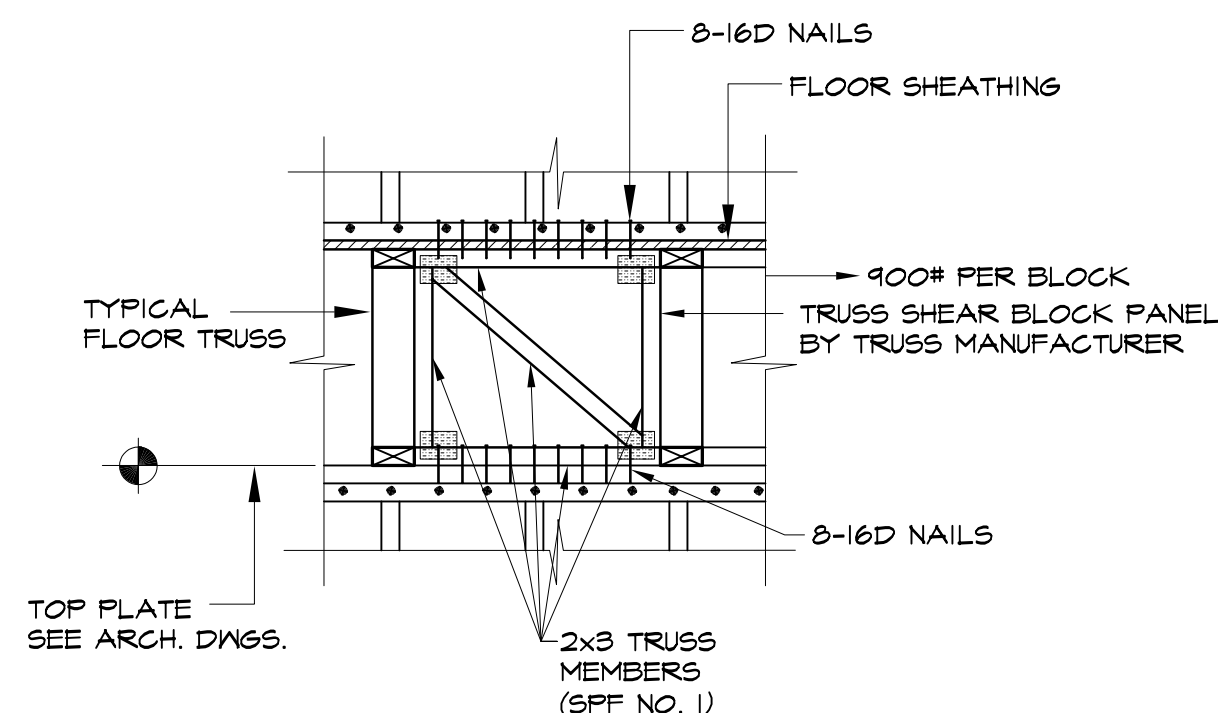
	OSB-SHEATHING NAILING & BLOCKING	PLATE FASTENING & SHEAR BLOCKING	SHEAR WALL ANCHORAGE TYPE A		SHEAR WALL ANCHORAGE TYPE B		SHEAR WALL ANCHORAGE TYPE C		SHEAR WALL ANCHORAGE TYPE D		SHEAR WALL ANCHORAGE TYPE E		SHEAR WALL ANCHORAGE TYPE F	
	EDGE NAIL TYPE & SPACING		WALL CHORDS		WALL CHORDS		WALL CHORDS		WALL CHORDS		WALL CHORDS		WALL CHORDS	
	FIELD NAIL TYPE & SPACING	SHEAR BLOCK SPACING	HOLDDOWNS / FLOOR TIES		HOLDDOWNS / FLOOR TIES		HOLDDOWNS / FLOOR TIES		HOLDDOWNS / FLOOR TIES		HOLDDOWNS / FLOOR TIES		HOLDDOWNS / FLOOR TIES	
LEVEL	BLOCKING	BOTTOM PLATE FASTENING	LEFT CHORD	RIGHT CHORD	LEFT CHORD	RIGHT CHORD	LEFT CHORD	RIGHT CHORD	LEFT CHORD	RIGHT CHORD	LEFT CHORD	RIGHT CHORD	LEFT CHORD	RIGHT CHORD
4TH FLOOR	8d NAILS @ 6" o.c.	@6'-0" (AT ROOF)	2-2x...	2-2x...	2-2x...	2-2x...			2-2x...	2-2x...	2-2x...	2-2x...	2-2x...	2-2x...
	8d NAILS @ 6" o.c.													
	BLOCKED	@4'-0"	C520	C520	C522	C522			C518	C518	N/A	N/A	C522	C522
3RD FLOOR	8d NAILS @ 6" o.c.	@2'-0"	2-2x...	2-2x...	2-2x...	2-2x...	2-2x...	2-2x...	2-2x...	2-2x...	2-2x...	2-2x...	2-2x...	2-2x...
	8d NAILS @ 6" o.c.													
	BLOCKED		2-C516	2-C516	C514	C514	N/A	N/A	2-C514	2-C514	N/A	N/A	C516	C516
2ND FLOOR	8d NAILS @ 4" o.c.	HILTI X-CP-12-P8-523 @6' O.C.	4-2x...	4-2x...	3-2x...	3-2x...	2-2x...	2-2x...	4-2x...	4-2x...	2-2x...	2-2x...	2-2x...	2-2x...
	8d NAILS @ 6" o.c.		HHD08-SD52.5 W/ 1" ANCHOR ROD	HHD08-SD52.5 W/ 1" ANCHOR ROD	HHD08-SD59 W/ 3/8" ANCHOR ROD	HHD08-SD59 W/ 3/8" ANCHOR ROD	HHD08-SD52.5 W/ 3/8" ANCHOR ROD	HHD08-SD52.5 W/ 3/8" ANCHOR ROD	HHD08-SD52.5 W/ 1" ANCHOR ROD	HHD08-SD52.5 W/ 1" ANCHOR ROD	N/A	N/A	HHD08-SD52.5 W/ 3/8" ANCHOR ROD	HHD08-SD52.5 W/ 3/8" ANCHOR ROD
	BLOCKED													
ANCHOR TYPE DETAIL			TYPE 1				TYPE 2		TYPE 1					

SHEAR WALL SCHEDULE NOTES:

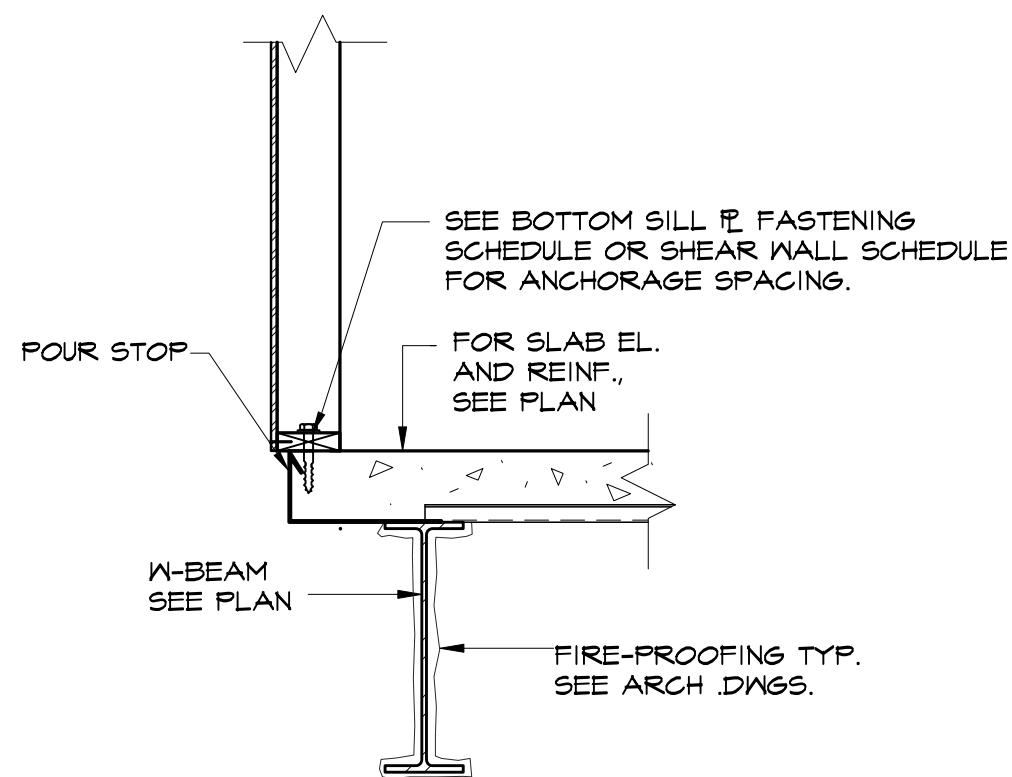
1. IF PLYWOOD PANELS ARE ORIENTED HORIZONTALLY THE EDGES OF ALL PANELS SHALL BE BLOCKED W/ SOLID 2X... MEMBERS.
2. VERTICALLY ORIENTED PANELS SHALL HAVE SUFFICIENT LENGTH TO SPAN FROM BOTTOM PLATE TO MID HEIGHT OF THE TOP PLATE.
3. FILLER PANEL AT FLOOR CAVITIES SHALL BE ATTACHED TO THE TOP PLATE OF THE LOWER WALL AND THE BOTTOM PLATE OF THE HIGHER WALL. NAIL PATTERN SHALL BE THE SAME AS THE LOWER WALL.
4. ALL INTERIOR SHEARWALL SHALL BE ATTACHED BY POWDER ACTUATED FASTENERS. SEE SCHEDULE FOR SPACING.
5. ALL HOLDDOWNS TO BE BY SIMPSON STRONG TIE OR EQUAL



TYPICAL PLYWOOD
SHEAR BLOCK PANEL DETAIL
OPTION #1

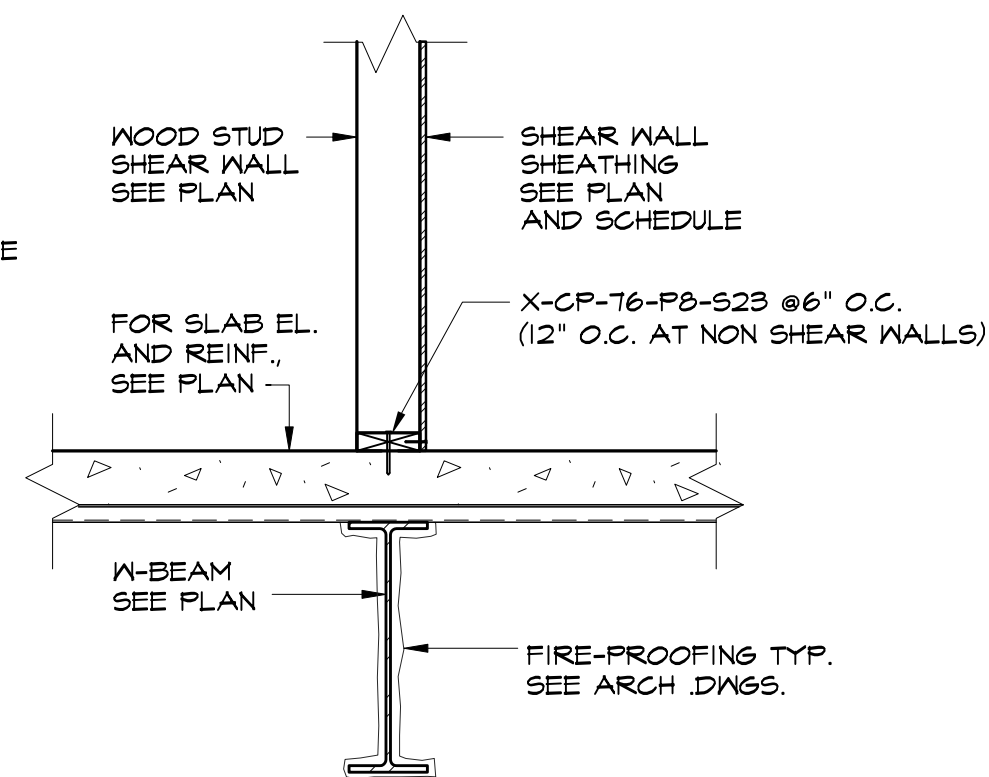


TYPICAL PLYWOOD
SHEAR BLOCK PANEL DETAIL
OPTION #2



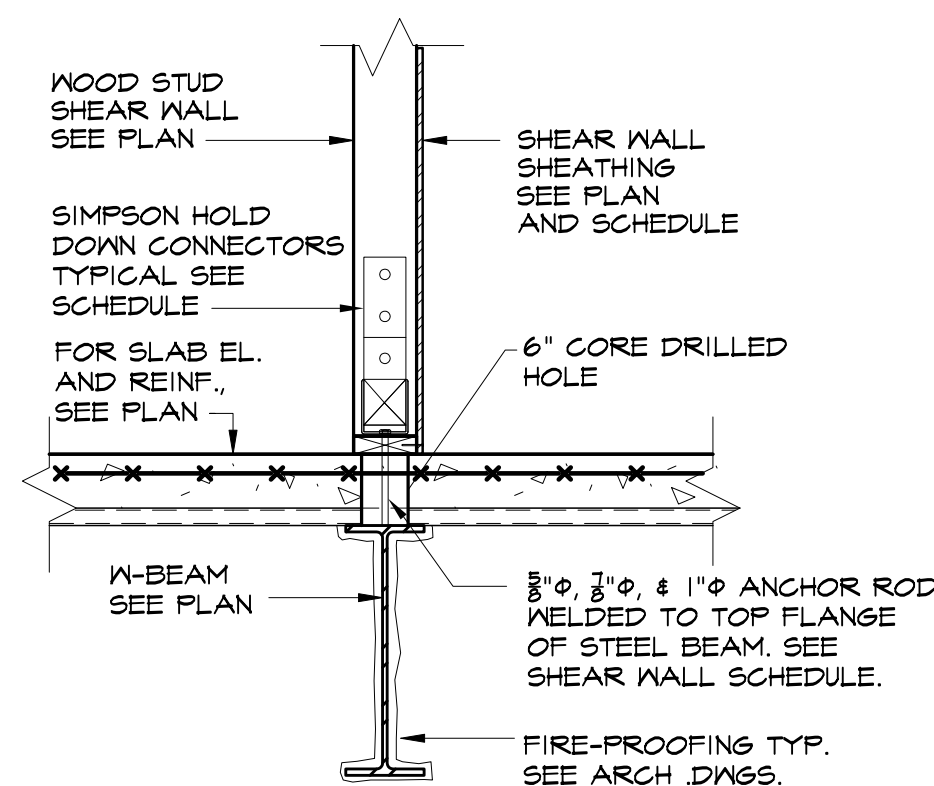
EXTERIOR SHEAR WALL

TYPICAL DETAIL OF
STUD WALL TO SLAB ON DECK



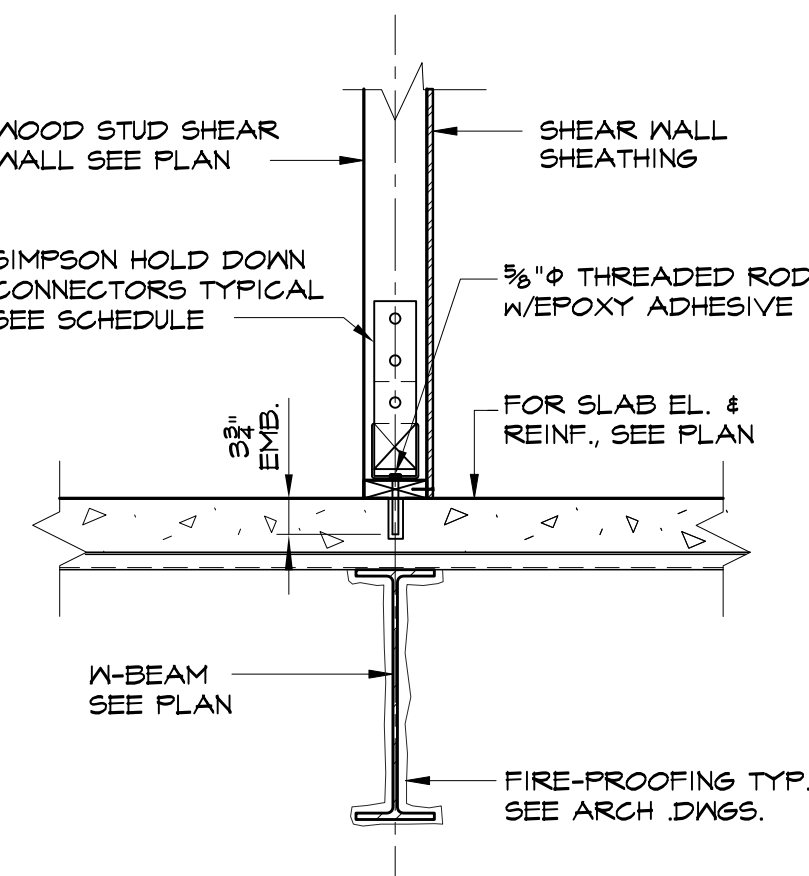
INTERIOR SHEAR WALL

TYPICAL DETAIL OF
STUD WALL TO SLAB ON DECK



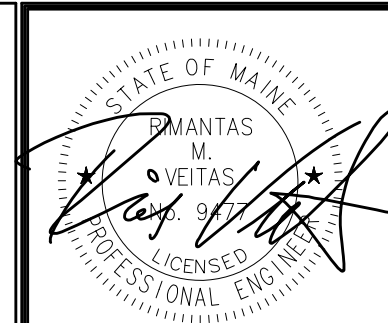
TYPE I INTERIOR HOLDDOWNS

TYPICAL DETAIL OF STUD
WALL WELDED HOLD-DOWN
AT SLAB ON DECK



TYPE 2 INTERIOR HOLDDOWNS

TYPICAL DETAIL OF STUD
WALL EPOXY HOLD-DOWN
AT SLAB ON DECK



Prepared For:

118 on Munjoy
Hill, LLC

118 CONGRESS STREET
PORTLAND ME 04101

Consultant:

VEITAS and VEITAS
engineers

630 Granite Street, Suite 101
Braintree, Massachusetts 02184
TEL (781) 843-2863 FAX (781) 849-2065

Architect:

BECHTOLD

18 Union Wharf Portland, Maine 04101
(207) 772-6022 Fax (207) 772-4056

Project:118 ON MUNJOY
HILL

1118 CONGRESS STREET
PORTLAND, MAINE

Revisions:

100% CONSTRUCTION DOCUMENTS

Scale:

As indicated

Date:

5 MAR 2014

Shear Wall Schedule & Shear Wall Details

S3.03